

Operating Section

3.1 Starting Engine

⚠ CAUTION

Make sure the intake hose is connected properly and that people and objects are clear of the hose.

figure 3a (Typical)



⚠ WARNING

Thoroughly read and understand the safety and pre-operating sections of this manual and the engine owner's manual before starting the engine.

⚠ CAUTION

DO NOT start the engine in an enclosed building. Proper ventilation is required before starting the engine.

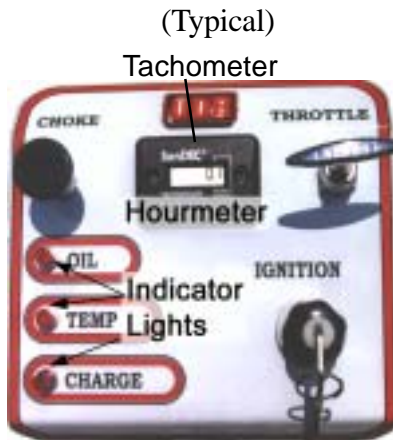
Review the Engine Operating Manual supplied with your leaf vacuum for specific start-up, maintenance and operating instructions. It is especially important to review break-in service procedures for brand new units.

Starting Procedure (refer to figure 3a):

1. Perform all the pre-starting, pre-operating checks outlined in the EOM and in this manual, including checking the engine oil and coolant level.
2. Check that the intake hose is connected properly and that people and objects are clear of the hose before starting the engine.
3. Pull the choke out and hold it out when the engine is cold, but in hot weather or when the engine is warm, use half choke or fully open the choke by pushing the choke lever all the way in.

Operating Section

figure 3a



CAUTION

NEVER run the engine with any of the warning lights illuminated. Doing so **MAY** cause severe engine damage.

CAUTION

Allow the engine to warm up sufficiently before collecting leaves. Collecting leaves with a cold engine **WILL** cause engine damage.

3.1 Starting Engine, continued;

4. Pull the throttle control (fig. 3a) to half throttle position to start.

IMPORTANT: Do not operate the starter for more than 5 seconds at a time. To do so may overheat the starter. If the engine does not start the first time, wait at least 15 seconds before trying again. If the engine fails to start after 4 attempts, see the trouble shooting section of the EOM and this manual.

5. Turn the ignition key all the way to the right, when the engine starts release the key. It should spring back to the first position.

IMPORTANT: If the ignition switch is released before the engine starts, wait until the starter and the engine stop turning before trying again. This will prevent possible damage to the starter and/or flywheel.

6. Check all the indicator lights for illumination. If any of the lights are illuminated, except the oil light, stop the engine and determine the cause. The oil light will stay on for a few seconds until the engine builds up oil pressure.

IMPORTANT: To assure proper lubrication, operate the engine at idle with no load for 1 -2 minutes. Extend this period 2 - 4 minutes when operating at temperatures below freezing.

7. After starting the engine, gradually push the choke cable all the way in.
8. Allow the engine to warm up by running the engine 3 - 5 minutes with the throttle at idle before collecting leaves.

Operating Section

figure 3a

(Typical)



3.1 Starting Engine, continued;

STOPPING THE ENGINE:

9. Lower the engine speed to an idle. Keep running at idle for one minute.

Turn the ignition switch to the "off" position.

CAUTION

Reduce engine speed to idle for one minute before shutting engine off. Engine damage can occur from run-on or after-burning if engine is stopped suddenly from high speed operation.